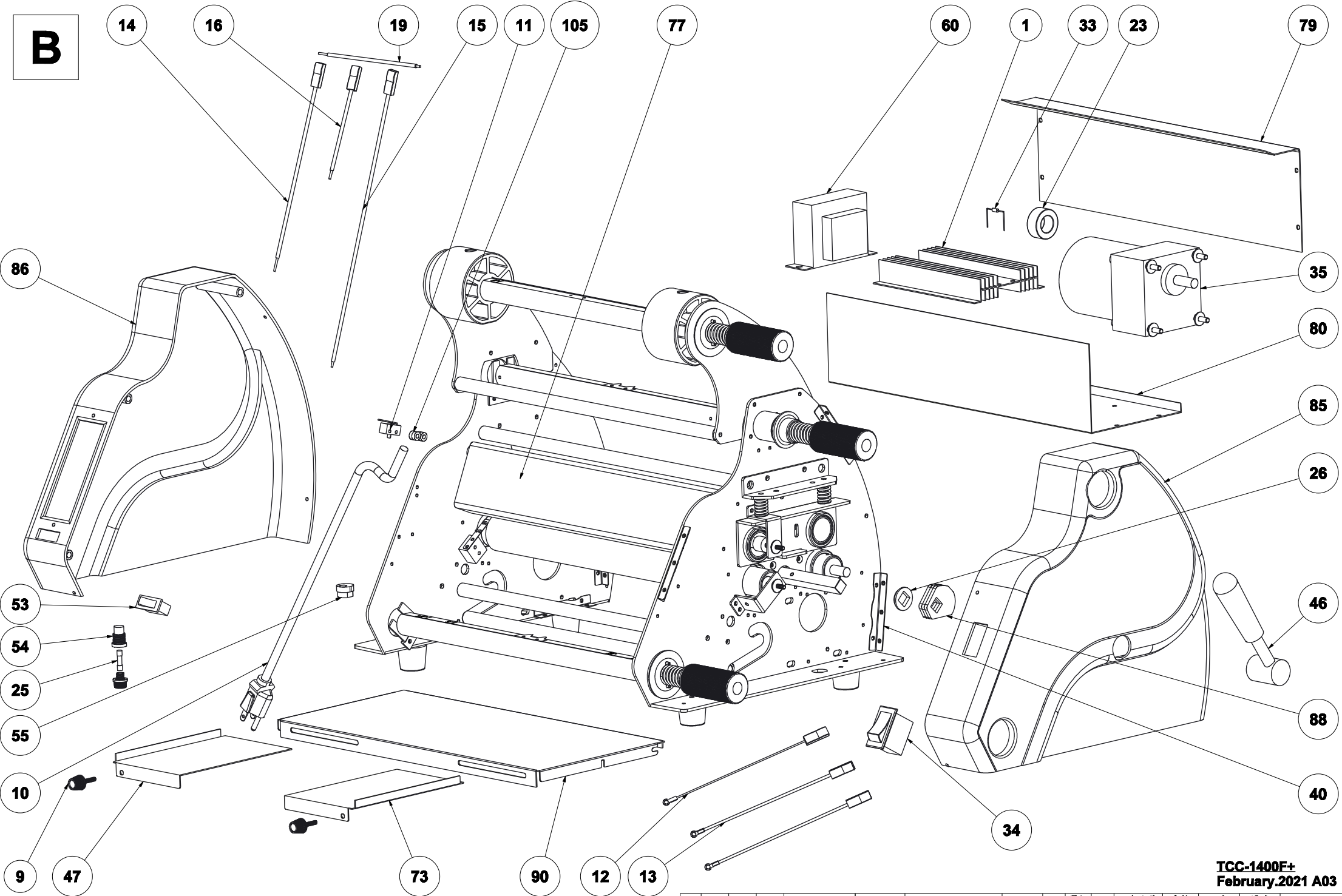


TCC-1400F+ PART MANUAL

NO.	PART NO.	DESCRIPTION	NO.	PART NO.	DESCRIPTION
1	15C-M	HEAT SINK (ALUMINUM)	54	RLM-50	FUSE SET
2	3H1-BP9-A	ISOLATION PAD	55	RLM-53-SR	WIRE JACKET
3	3H1-D30	THERMO	56	RLM-54	PAD
4	3H1-D33	TEMPERATURE SENSOR WITH WIRE	57	RLM-55	PAD
5	3H1-P11	BAKELITE SHEET	58	RLM-58-1 深藍	3" ADAPTER
6	3H1-P8-2S-110-400	HEATER	59	RLM-60	FIXED POLE
7	3H1-P8-3B	FIXED SCREW	60	RLM-62	TRANSFORMER
8	3H1-P8-V	QUARTZ TUBE	61	RLM-14L	TOP ROD
9	CB-3	GUIDE SCREW	62	RLM-14L-1	BOTTOM ROD
10	D209-EP-31	POWER WIRE	63	RLM-15S	EXPAND SHAFT Ø5
11	D266-D-1	LIMIT SWITCH	64	RLM-15S	EXPAND SHAFT Ø5 (REVISE)
12	D266-H-1	WIRE (MOTOR SWITCH TO MOTOR RED)	65	RLM-15S-2	EXPAND SHAFT (MOVABLE)
13	D266-I-1	WIRE (MOTOR SWITCH TO MOTOR BLACK/LIMIT SWITCH)	66	RLM-16L	FIXED SHAFT (REVISE)
14	D266-K	WIRE (POWER SWITCH TO WIRE P AND POWER CORD WHITE)	67	RLM-16S-1	FIXED SHAFT
15	D266-L	WIRE (POWER SWITCH TO PCB)	68	RLM-17S	ADJUSTMENT SHAFT
16	D266-M	WIRE (POWER SWITCH TO FUSE SET)	69	RLM-27T 黑色	CONTROL PANEL
17	D266-N	WIRE (UPPER & LOWER HEATER)	70	RLM-28T 黑色	BUTTON NAMEPLATE
18	D266-O-1	WIRE (HEATER TO PCB)	71	RLM-2HC-2	BUSH SPROCKET
19	D266-P	WIRE (WIRE K AND POWER CORD WHITE TO PCB)	72	RLM-2T	TOP/ BOTTOM ROLLER
20	D266-Q	CUT-OFF FUSE	73	RLM-33A	SIDE GUIDE (R)
21	D266-Q-1	WIRE (WIRE Q TO PCB)	74	RLM-37A	PROTECTIVE SHEET
22	D273-2"	CONTROL JACKET	75	RLM-37N	SLITTER
23	D2A7	TORODIAL RING	76	RLM-38N	SLITTER
24	D509040070400 E	SCREW	77	RLM-59L	SHIELD
25	EP-10-10A	FUSE	78	RLM-9L	MIDDLE GUIDE PLATE
26	FD-39	BUSH SQUARE	79	RLM-B18-I	REAR PLATE
27	HP-10	CAP	80	RLM-B19-I	INNER COVER
28	HTC-9	LINER ADAPTER	81	RLM-B1N	BRACKET (R)
29	HTC-10N	LINER BOLT	82	RLM-B20-1	FRONT ROLLER SPROCKET (20T)
30	HTC-10N-1	BUSH	83	RLM-B20-2	REAR ROLLER SPROCKET (19T)
31	HTC-10N-2	SPACER	84	RLM-B20-3	MOTOR SPROCKET (20T)
32	HTC-8N-1	SPROCKET (17T)	85	RLM-B22	SIDE COVER (R)
33	P6KE30CA	VARISITOR	86	RLM-B22-1	SIDE COVER (L)
34	R13-220BA	MOTOR CONTROL SWITCH	87	RLM-B25	CU BUSH
35	RLM-5	DC MOTOR (DC 24 N1:75)	88	RLM-B29	THANSMIT PARTS
36	RLM-10	FEEDING PLATE	89	RLM-B2N	BRACKET (L)
37	RLM-12	FEEDING PLATE	90	RLM-B3-I	FEED TRAY
38	RLM-13	PAD	91	RLM-B4	FIXING PLATE FOR HEATER
39	RLM-14-1F+	LINER ROLL	92	RLM-B42-1	SPRING (FRONT)
40	RLM-21	FIXING PLATE	93	RLM-B45	CHAIN
41	RLM-23	KNOB	94	RLM-B45-1	CHAIN
42	RLM-26	PANNEL RACK	95	RLM-B6	PRESS PLATE
43	RLM-27-1-B	PCB	96	RLM-B8	HEATER BRACKET
44	RLM-27-2-B	LED PCB	97	RLM-P1-1F	UPPER BRACKET (L)
45	RLM-27-3	CONNECT WIRE	98	RLM-P1-2F	UPPER BRACKET (R)
46	RLM-32	HANDLE	99	RLM-P61-7	WHEEL
47	RLM-33	SIDE GUIDE (L)	100	RLM-P61-H	STAND
48	RLM-39	SPACER SUPPORT	101	RLM-P63-II	BAR
49	RLM-42	SPRING (REAR)	102	RLM-W1	PAD
50	RLM-43-1	SPRING	103	S3-D13-1	QUARTZ TUBE CAP
51	RLM-44	CORE GRIPPER	104	SB-4	FOOT
52	RLM-47-1	BLADE	105	TB-10	PAD
53	RLM-48 黑色	POWER SWITCH			

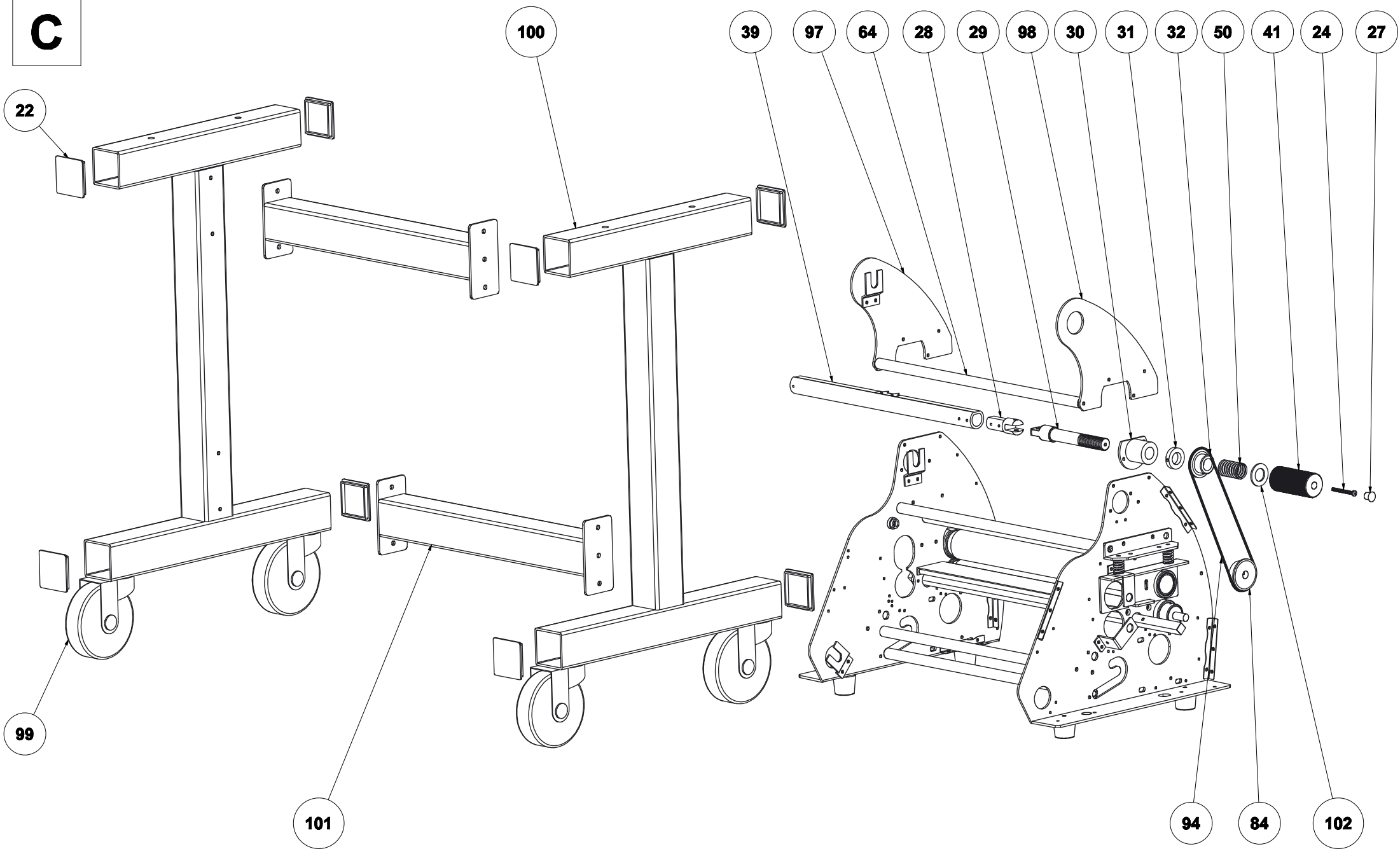
B

TCC-1400F+
February.2021 A03

單位	mm	一般公差	審核	日期	圖號
比例	0.400	X1± 0.1 X2± 0.05			TCC-1400F+
版本	A03	±0.001 ±0.0	繪圖	日期	達新工業股份有限公司
版本修改者	審核	日期	修改內容	件號	名稱
					材質
					數量
					表面處理
					Ⓢ A1

February, 2021

C



TCC-1400F+
February.2021 A03

單位	mm	一般公差	審核	日期	圖號
		X1± 0.1			TCC-1400F+
		X2± 0.05			
		X3± 0.001			
		ANGLE± 0.6			
比例	A03		繪圖	日期	達新工業股份有限公司
版本				February, 2021	
版本修改者	審核	日期	修改內容	件號	名稱
					材質
					數量
					表面處理
					⊙ A1