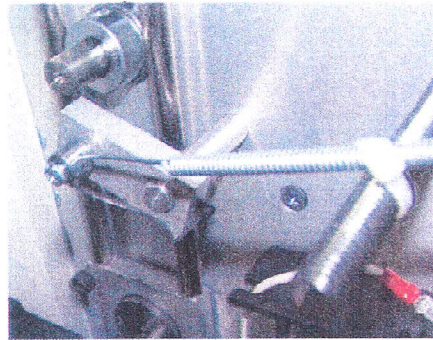
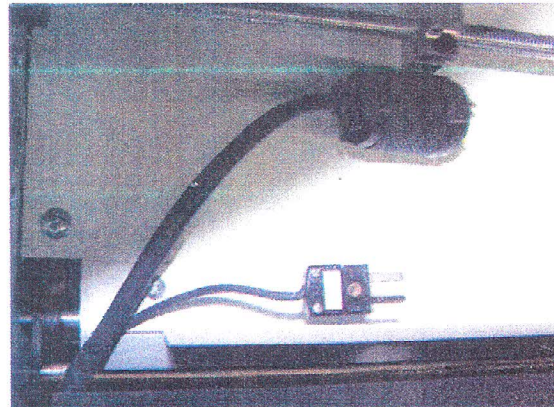


POSITION AND SECURE THE 6-32 X 1/4 PH ON THE CABLE. SECURE THE ACTUATING LEVER ON THE BOTTOM ACTUATING BAR WITH THE SET SCREW IN THE LEVER.

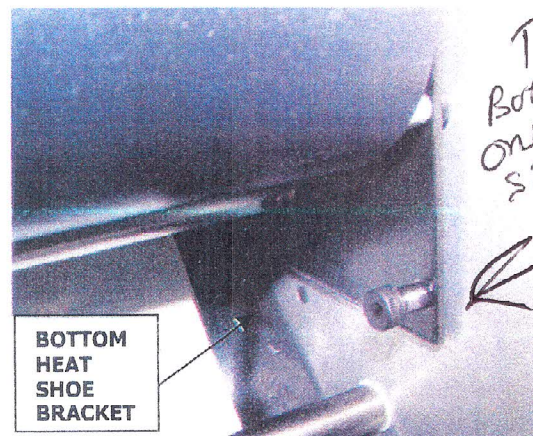


- 35) CABLE TIE THE COILED SPRING SECTION OF THE SLITTER CHOKE CABLE TO THE SLITTER ADJUSTING ROD, SO IT DOES NOT INTERFERE WITH ANY MOVING PARTS WHILE THE LAMINATOR IS RUNNING.

- 36) INSTALL THE BOTTOM HEAT SHOE ASSEMBLY BY FIRST PUTTING THE LEFT SIDE HEATER AND THERMO COUPLE PLUGS ON THE TOP HOUSING TO AVOID PINCHING THEM. FIT THE BOTTOM HEAT SHOE BRACKET NOTCH ONTO THE STEEL SPACER. SECURE THE BOTTOM HEAT SHOE BRACKETS TO THE RIGHT AND LEFT SIDE PANELS WITH A 1/4 X 5/16 SHOULDER BOLT.



- 37) INSTALL THE TOP HEAT SHOE ASSEMBLY BY FITTING THE TOP HEAT SHOE BRACKET NOTCH OVER THE STEEL SPACERS AND SECURE THE TOP HEAT SHOE BRACKETS TO THE RIGHT AND LEFT SIDE PANELS WITH A 1/4 X 5/16 SHOULDER BOLT. THE HEATER AND THERMO COUPLE PLUGS GO *UNDER* THE TOP IDLER ROD.



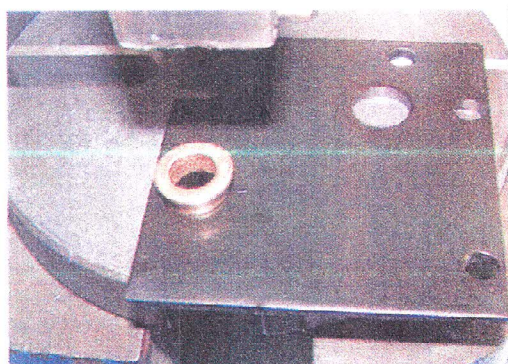
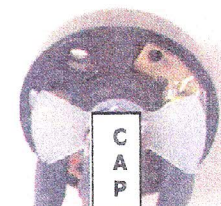
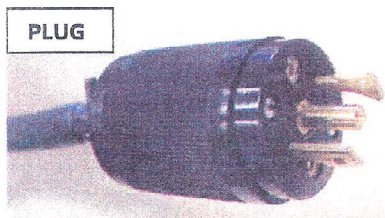
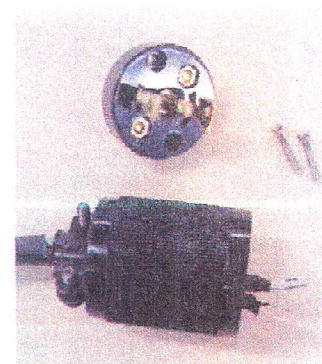
To Remove Bottom Shoe One Bolt Per Side - Shoe Slides out

- 38) PLUG THE BOTTOM HEAT SHOE THERMO COUPLE AND HEATER PLUGS INTO THE LOWER RECEPTACLES.

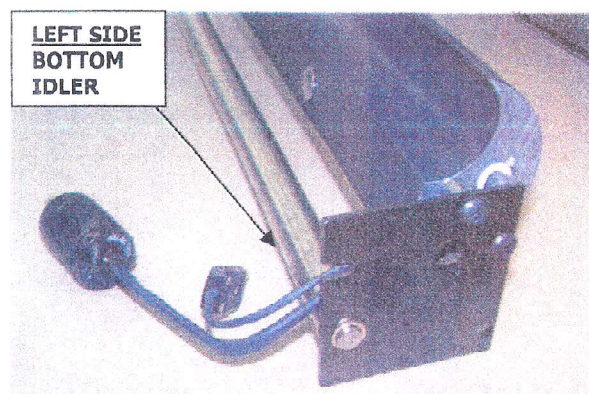
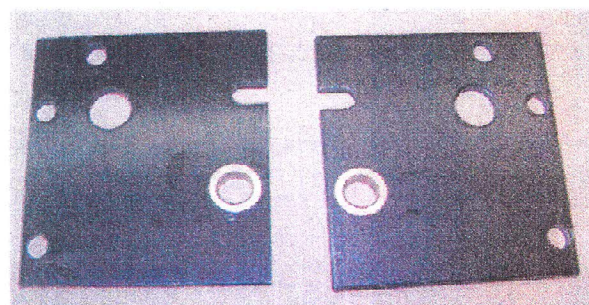


- 39) PLUG THE TOP HEAT SHOE THERMO COUPLE AND HEATER PLUGS INTO THE UPPER RECEPTACLES.

- 16) ALIGN SCREW HOLES ON END CAP WITH SCREW THREADS AND PLACE WIRED END CAP BACK ON ARROWHEAD PLUG HOUSING. RECONNECT THE PLUG HOUSING TO THE WIRED END CAP USING ORIGINAL SCREWS.
- 17) REPEAT THE COMPLETE ARROWHEAD PLUG CONNECTION PROCEDURE ON THE REMAINING HEAT SHOE.
- 18) ARBOR PRESS A FLANGED OILITE BUSHING (PRB046A) **AS02** *WITH THE FLANGE ALIGNING TO THE INSIDE FACING THE HEAT SHOE*, INTO THE OPENING ALONG THE NOTCHED EDGE OF (2) HEAT SHOE BRACKET BOTTOMS (H850 065.4B) **AS03**, FOR THE RIGHT AND LEFT SIDE OF THE HEAT SHOE.
- 19) WITH THE NOTCH AND OILITE BUSHING FACING UPWARD, CONNECT THE LEFT SIDE HEAT SHOE BRACKET BOTTOM TO THE WIRED SIDE OF THE BOTTOM HEAT SHOE USING (2) 1/4-20 X 1 BHCS, EACH WITH A 7/16 STEEL SPACER CEM (PRS232) **AS10** RIDING ON THE SCREW THREADS BETWEEN THE BOTTOM BRACKET AND THE HEAT SHOE. SEE PHOTO OF HEAT SHOE AND BRACKET ALIGNMENT.
- 20) THE WIRES FOR THE BOTTOM HEAT SHOE SHOULD ALIGN ON THE INSIDE OF THE BOTTOM HEAT SHOE BRACKET, BENT FORWARD TOWARD THE THICKER PART OF THE HEAT SHOE RUNNING BETWEEN THE STEEL SPACERS.
- 21) BEFORE CONNECTING THE RIGHT SIDE BOTTOM HEAT SHOE BRACKET, INSERT THE BOTTOM IDLER (H500 052.4B) **AS04** INTO THE OILITE BUSHING ON THE LEFT SIDE BOTTOM BRACKET. ALIGN THE BOTTOM IDLER INTO THE RIGHT SIDE OILITE BUSHING OF THE BOTTOM BRACKET AND CONNECT USING (2) 1/4-20 X 1 BHCS WITH A STEEL SPACER ON THE THREADS BETWEEN THE BRACKET AND THE SHOE.
- 22) CONNECT THE TOP HEAT SHOE BRACKETS (H850 065.4T) **AS03** TO THE RIGHT AND LEFT SIDE OF THE TOP HEAT



HEAT SHOE BRACKET BOTTOM WITH OILITE BUSHING



LEFT SIDE BOTTOM IDLER