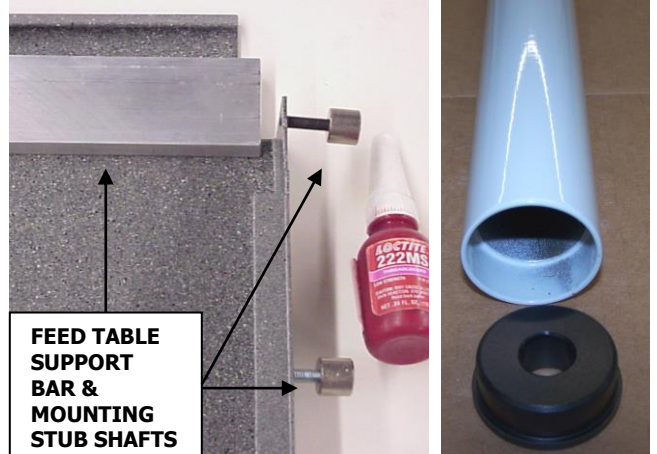
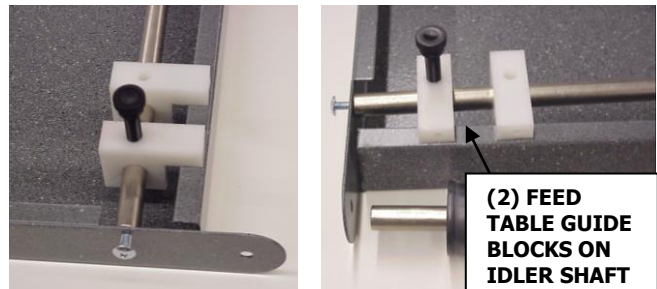
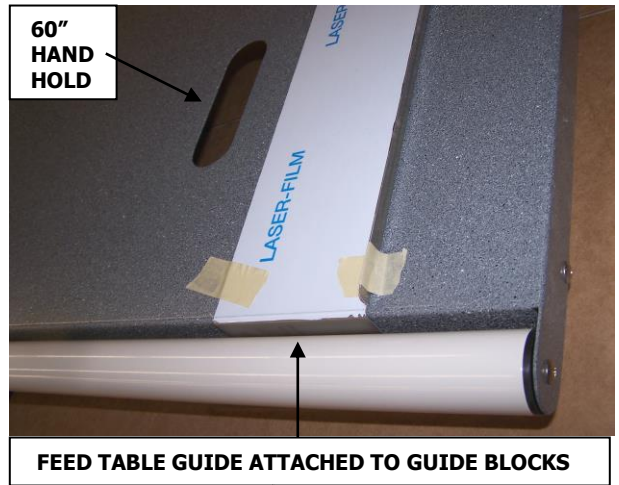


# ECONOCRAFT 44, 60 FEED TABLE ASSEMBLY

- 1) LAY DIGITAL 60, EP30 OR EHR44 FEED TABLE (D60, EP30 OR EHR44 108.4) **D-02** UPSIDE DOWN ON WORK BENCH. SECURE PROXIMITY SWITCH MAGNET (PRS352) **RACK 1** INTO PROVIDED SLOT WITH (2) 4-40 X 3/8 PHMS ON OUTSIDE. TIGHTEN WITH (2) 4-40 NUTS INSIDE.
- 2) SLIDE (4) FEED TABLE GUIDE MOUNTING BRACKETS (D105 104.4) **AS13** ONTO FEED TABLE IDLER SHAFT (D60, EP30 OR EHR44 109.4) **LOFT 2**. NOTE PICTURE POSITION. SECURE SHAFT WITH (2) 10-32 X 1/2 TH WITH LOCTITE ON THREADS. INSERT (2) 5/16-18 X 1 PLASTIC MOLDED THUMBSCREW (PRK184) **AS09** INTO OUTSIDE GUIDE BLOCKS.
- 3) TAP (2) IDLER BEARING NYLATRON (PRB086A) **AS13** ONTO ENDS OF FEED TABLE IDLER TUBE (D60, EP30 OR EHR44 054.4) **D-01, AS17** OR **AS15** INSERT 2ND FEED TABLE IDLER SHAFT THROUGH NYLATRON BEARINGS. SECURE TO FEED TABLE ARM IN FRONT OF GUIDE BLOCKS WITH LOCTITE ON 10-32 X 1/2 TH.
- 4) THE FEED TABLE SUPPORT BAR (D60 EP30 OR EHR44 111.4) **LOFT 2, AS17** OR **AS15** IS ANGLED WHEN FIRST ATTACHING TO THE REAR OF THE FEED TABLE. LOCTITE HALF OF THE THREADS ON (2) 10-32 X 3/4 SHSS AND INSERT THAT HALF THROUGH FEED TABLE AND INTO SUPPORT BAR. FLIP SUPPORT BAR UPRIGHT. LOCTITE REMAINING THREADS AND ATTACH (2) FEED TABLE MOUNTING STUB SHAFTS (D105 101.4) **AS13** WITH BEVELED SIDE OF STUB OUT.
- 5) ADD ANOTHER PAIR OF FEED TABLE MOUNTING STUB SHAFTS ON OUTER RIGHT AND LEFT SIDES. SECURE WITH (2) 10-32 X 1/2 TH FROM INNER EDGE, LOCTITE THREADS.



- 6) **PEEL BACK PLASTIC COVERING ON FEED TABLE GUIDE LEFT (LC38 097.4L) AND FEED TABLE GUIDE RIGHT (LC38 097.4R) AS13 TO EXPOSE HOLES. SNUG THE (4) FEED TABLE GUIDE BLOCKS TO THE FEED TABLE GUIDES WITH (4) 10-32 X  $\frac{3}{4}$  TH. GUIDES MUST SLIDE ON SHAFT. SECURE TO SHAFT WITH THUMBSCREWS IN GUIDE BLOCKS.**



- 7) **ALIGN FOUR MOUNTING STUB SHAFTS WITH FEED TABLE MOUNTING BRACKETS TO PLACE ON LAMINATOR.**

